

What are the flats like?

Each flat consists of a:

- Spacious lounge
- Fitted kitchen with oven, hob, fridge and freezer.
- Laundry cupboard with a washing machine.
- Double bedroom with a built in wardrobe.
- Tiled bathroom with shower over the bath.

The flat is partly furnished; this enables you to finish furnishing and decorating it to your individual taste.



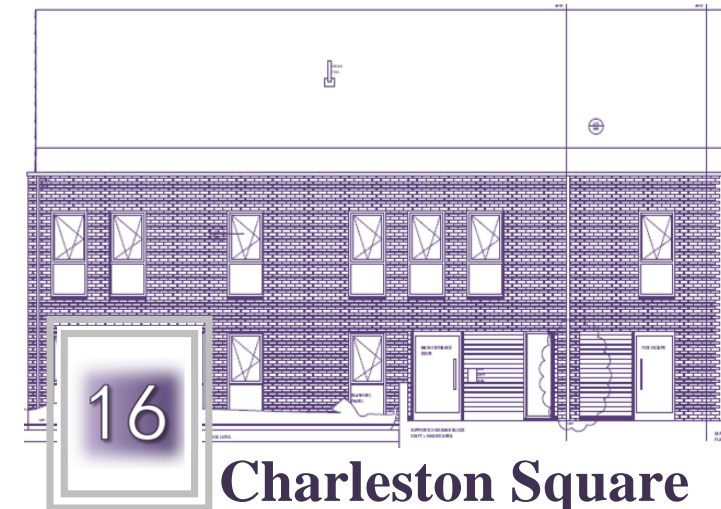
If you are interested in living at 16 Charleston Square you can discuss this with your social worker or support worker or phone to find out more information or to arrange a visit.

16 Charleston Square
Paisley
PA2 6EY

0141 581 0500



Tenancy Information



Charleston Square

**Independence
Support
Development**

16

Charleston
Square

The housing development at 16 Charleston Square was especially designed for young people. It consists of 10 individual, modern, one bedroom flats and a support hub

The flats were built after care leavers, like you, raised concerns about the difficulties they faced when moving on from foster or residential care to living independently and many suggested they needed more support.

The accommodation at 16 Charleston Square provides independent living where 24-hour help is available, if required, from support officers; who are based in the hub area of the development

If you apply for a flat at 16 Charleston Square, you are showing that you would like support to help you take on the responsibilities of managing your own home.



Who can live at 16 Charleston Square?

You can apply to rent a flat at 16 Charleston Square if you have been in foster or residential care for at least 13 weeks since your 14th birthday, and you have been accommodated by Renfrewshire Council on or after your official school leaving date.

What support is offered?

You will be linked with an accommodation support worker who will help you to identify the support you need, using a Housing Support Assessment and Pathway Plan. To help you develop the skills you require, to live independently and move onto a permanent tenancy, you will review this plan with your accommodation support worker every 12 weeks.

The images are an artistic representation

What is expected of you?

As a tenant at 16 Charleston Square you will be respected as an adult and you will wish to be a responsible neighbour.

You will take on new responsibilities including:

- Signing an Accommodation agreement,
- Adhering to the terms of the agreement and Throughcare's regulations,
- Engaging with support offered,
- Actively developing and working towards achieving your goals, as identified in your Housing Support Assessment and Pathway Plan,
- Paying all your bills on time,
- Keeping your flat clean and tidy,
- Engaging with education, employment and training.

