

# Clyde Waterfront and Renfrew Riverside Project (CWRR)

## Project Overview

The £78M Clyde Waterfront and Renfrew Riverside Project (CWRR) aims to significantly enhance connectivity and economic development opportunities for existing and new businesses in the City Region. It will also create new opportunities at key development sites along both sides of the River Clyde.

The new opening bridge across the Clyde, for cars, public transport, cyclists and pedestrians, will give currently disengaged communities and

businesses better access to jobs, customers, services, facilities and amenities.

The new transport infrastructure south of the River Clyde will open up areas of derelict and underused land for development and act as a catalyst for a transformational change in an area with the potential to be an attractive business and residential destination.



## Project aims and objectives

- To unlock the development potential in existing vacant or derelict sites to attract private investment and create employment and housing opportunities.
- To improve the connections between businesses, suppliers, amenities, services and communities on both sides of the Clyde.
- To advance the location as a vibrant riverside quarter; maximising potential for private investment in residential, retail and commercial developments.
- To optimise the delivery of a focussed economic development strategy by taking advantage of the project's proximity to the Glasgow Airport Investment Area and major developments.
- To build on existing planned developments and transport interventions to deliver further economic regeneration
- To create jobs during construction of the infrastructure and through resulting development opportunities.



# Glasgow Airport Investment Area (GAIA)

## Project Overview

The £52M Glasgow Airport Investment Area project is a major opportunity to create a world class business and commercial location right in the heart of Renfrewshire.

The Glasgow Airport Investment Area has the potential to become a powerhouse of economic growth for Renfrewshire and the Glasgow City Region, aided by its proximity to the M8 motorway, and key commercial centres with significant economic growth potential such as the Airport, Westway and Inchinnan Business Parks, and Paisley and Renfrew town centres.

To help realise that potential, the project will deliver infrastructure and environmental improvements, including: two new bridges across the White Cart, a

new “Gateway” route between Paisley Town Centre and the airport and improved facilities for public transport, cyclists and pedestrians.

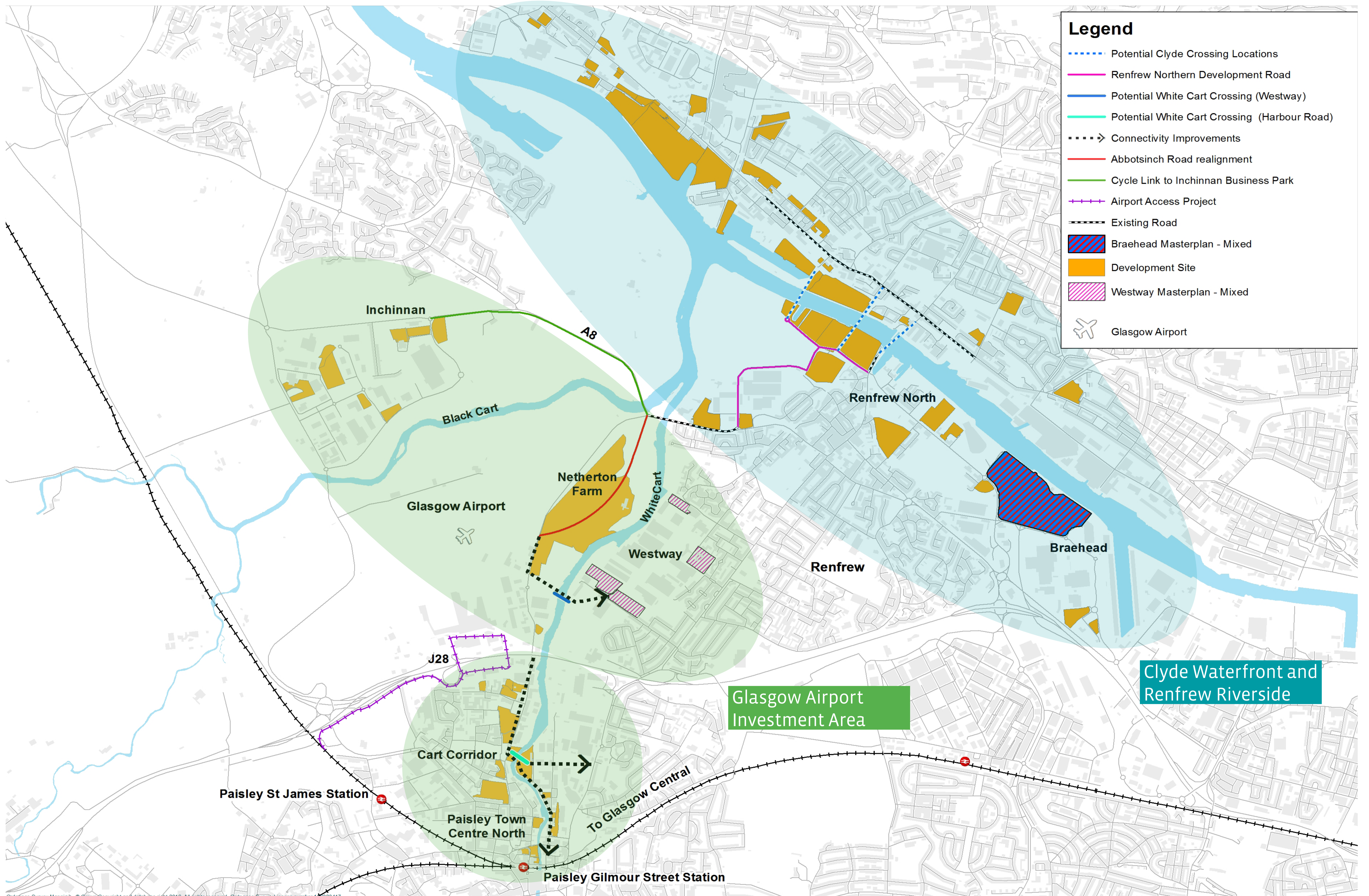
In addition to enabling the continued growth and expansion of the airport and surrounding businesses, this investment in infrastructure will help to make the area a more attractive, vibrant and sustainable place to live and work by better connecting communities and businesses.

These infrastructure improvements will also build on and compliment the improved connections being delivered by the Clyde Waterfront & Renfrew Riverside project.

## Project aims and objectives

- To facilitate the development and expansion of Glasgow International Airport as a key national development and gateway for investment in line with national planning policy and the Glasgow Airport Masterplan.
- To unlock the development potential and attract private investment into vacant and underused sites along the Cart Corridor; creating employment and development opportunities.
- To maximise the potential of the Glasgow Airport Investment Area as a key strategic business location and centre for economic growth.
- To optimise the results of a focused economic strategy by taking advantage of the opportunities provided by the Glasgow Airport Investment Area and the project’s proximity to major development sites along the Cart corridor.
- To build upon current investments at the Inchinnan and Westway Business Parks to maximise economic development opportunities.
- To create jobs during construction of the infrastructure and through its resulting development opportunities.

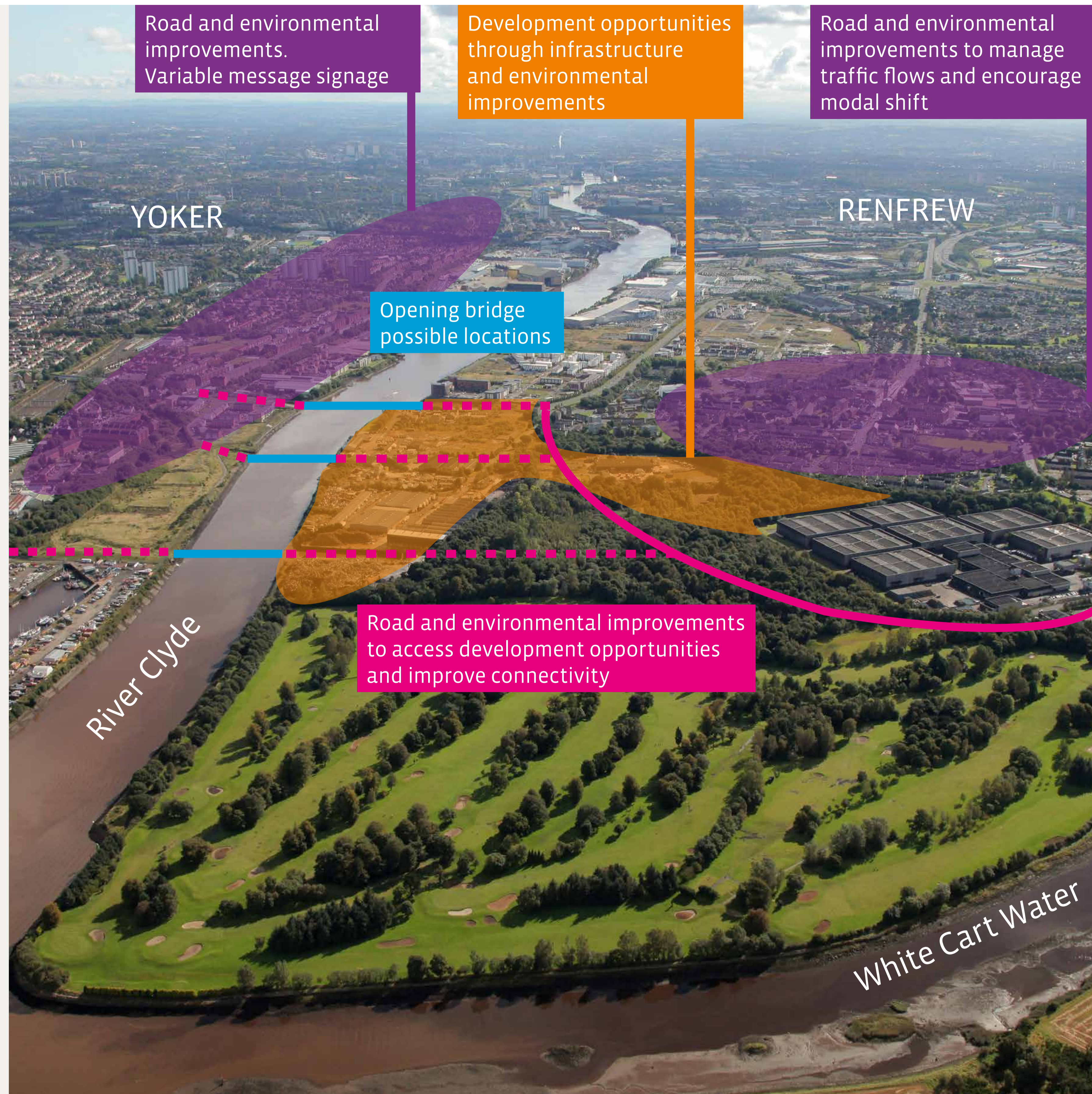




Cartography: Surveyor Manning & Co. © Crown Copyright and database right 2018. All rights reserved. Ordnance Survey Licence number: 100029417

## Clyde Waterfront And Renfrew Riverside— Scope (Indicative)

- Opening bridge across the River Clyde between Renfrew and Yoker for vehicles, public transport, pedestrians and cycles.
- New Renfrew Northern Development Road which will include links to existing and new industrial, commercial and residential development sites.
- Public transport and active travel enhancements which will link to the complementary Glasgow Airport Investment Area project.
- Complementary improvements to existing road infrastructure.
- Green Network enhancements will complement the creation of a strategic linear route linking Yoker, Renfrew and Paisley Town Centres to provide more pedestrian and cycle friendly connections.

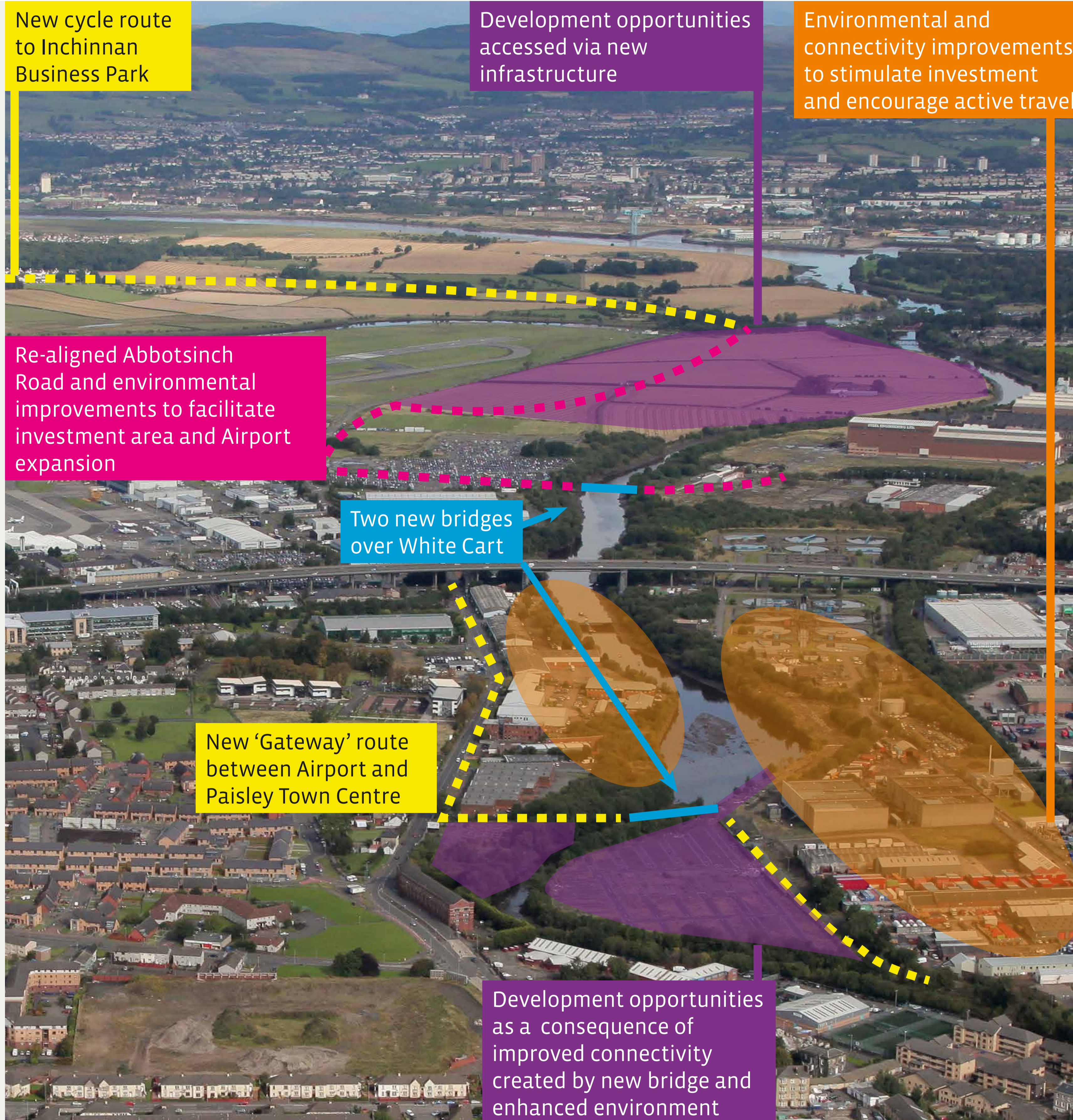


## Key Considerations and Constraints

- Maintaining navigation requirements along the strategically and economically important River Clyde.
- Finding the best location of the opening bridge and roads to suit existing and future developments on south and north river banks.
- Managing altered traffic flows in and around Renfrew, Yoker and Clydebank.
- Routing of traffic to and from the strategic road network.
- Ferry operation during construction.
- Interface with flood prevention measures.
- Location of new active travel routes and links to existing and planned routes.
- Public transport requirements.
- Environmental impact and enhancement opportunities.

## Glasgow Airport Investment Area— Scope (Indicative)

- Realignment of a section of Abbotsinch Road, to the west of the White Cart Bascule Bridge.
- A new bridge across the White Cart linking industrial and commercial sites with the realigned Abbotsinch Road.
- Another new bridge across the White Cart near Paisley Harbour to improve connectivity and enhance development opportunities.
- A new “Gateway” route between the Airport and Paisley Town Centre.
- New and improved cycle and pedestrian links between Paisley and Renfrew Town Centres, Inchinnan Business Park, Glasgow Airport Investment Area and the complimentary Clyde Waterfront and Renfrew Riverside project.



## Key Considerations and Constraints

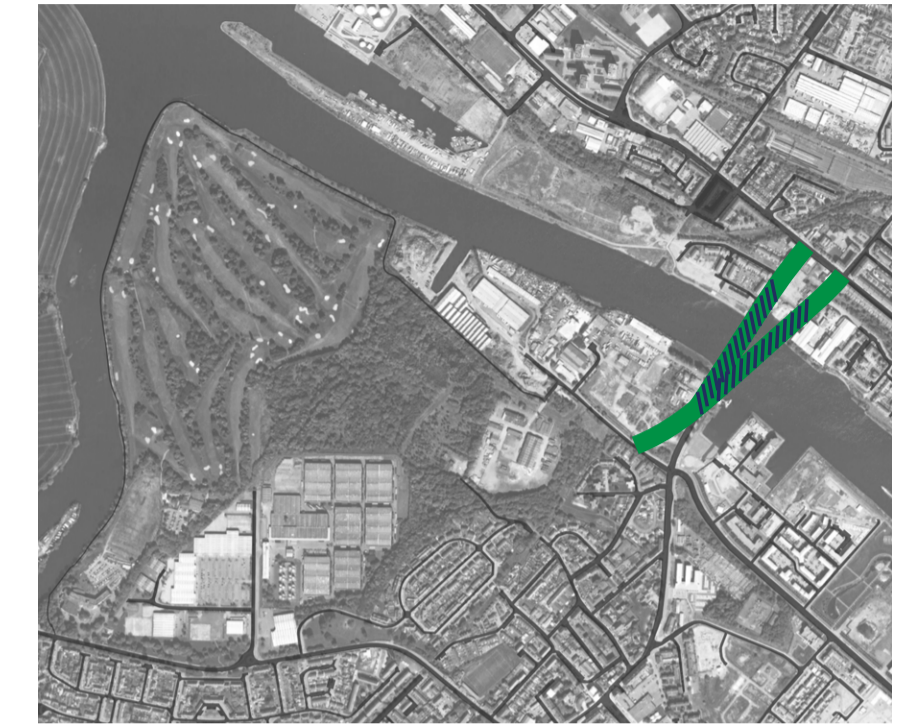
- Agreement with Glasgow Airport on land boundary for future development.
- Optimising the location of the bridges and roads to suit existing and future developments along the Cart Corridor.
- Management of altered traffic flows in and around the development sites.
- Routing of traffic to and from the strategic road network.
- Flood mitigation measures e.g. at Netherton Farm.
- Location of new active travel routes and links to existing and planned routes.
- Public transport requirements.
- Environmental impact and enhancement opportunities.

## Current Position

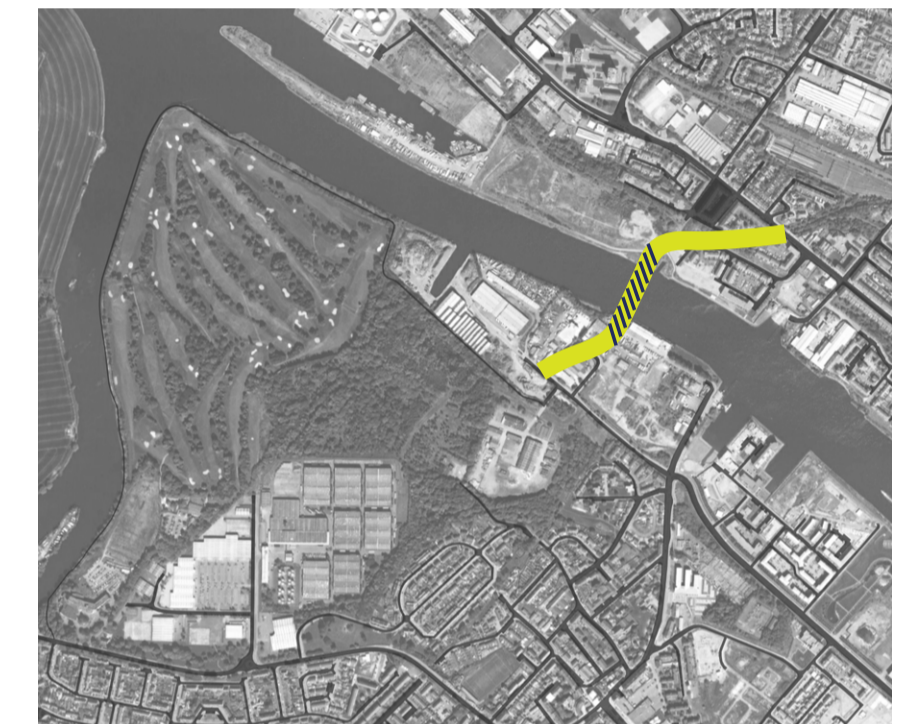
- The Project Team is now identifying possible locations for the bridges and associated roads, paths and cycle ways to best deliver the project objectives.
- These options will each be assessed and refined in an appraisal process to establish the most appropriate and cost effective option.
- The option appraisal process is programmed is to be complete in June 2016. By then, the best performing options for bridge locations and road and cycleway alignments will have been identified.
- During the options appraisal process, public exhibitions will be held to allow stakeholders and the general public to contribute to, and comment on, the various options and the emerging designs.

# CLYDE WATERFRONT & RENFREW RIVERSIDE AREA

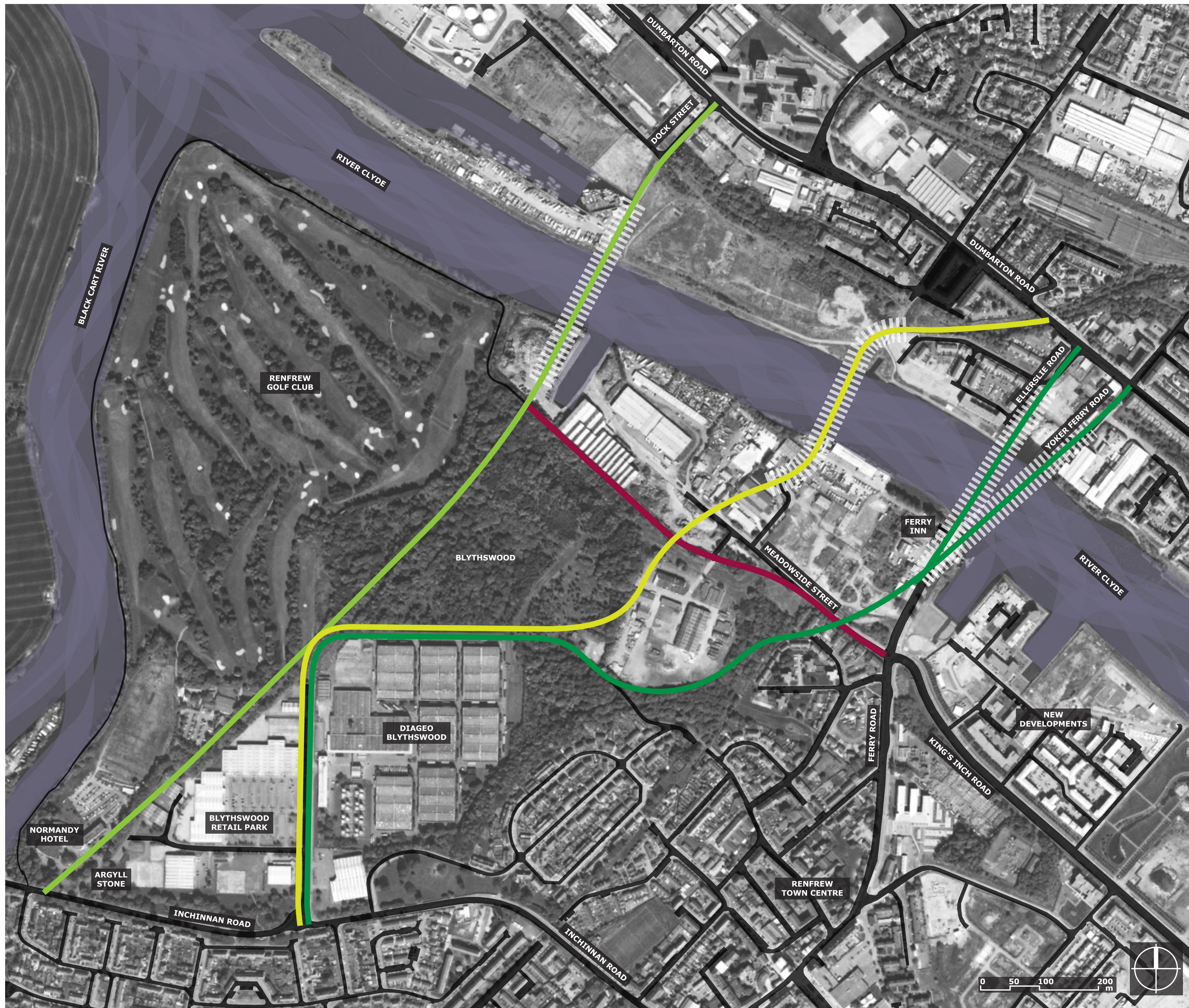
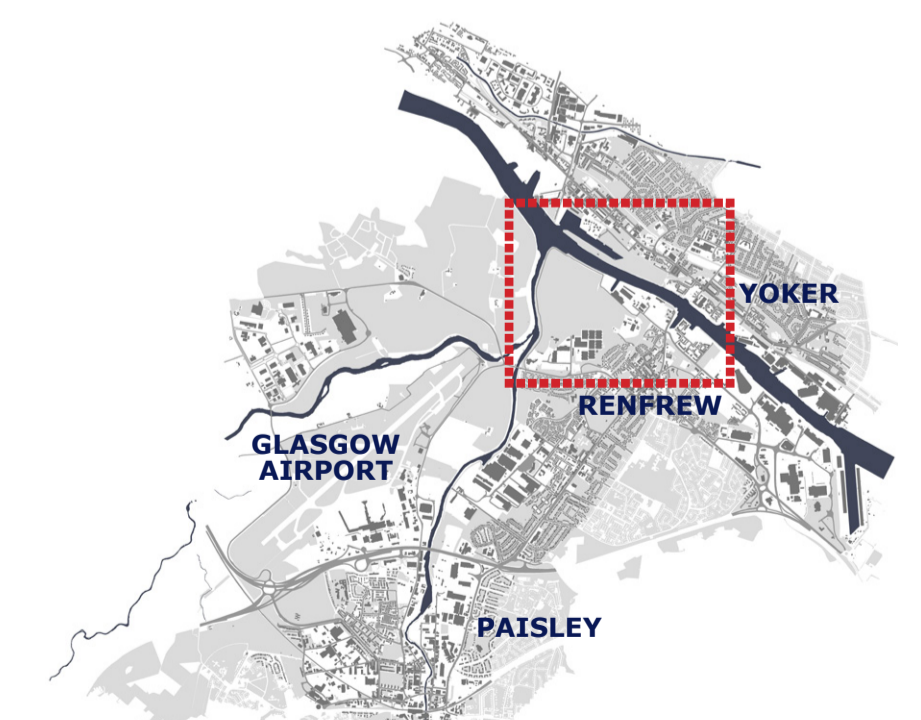
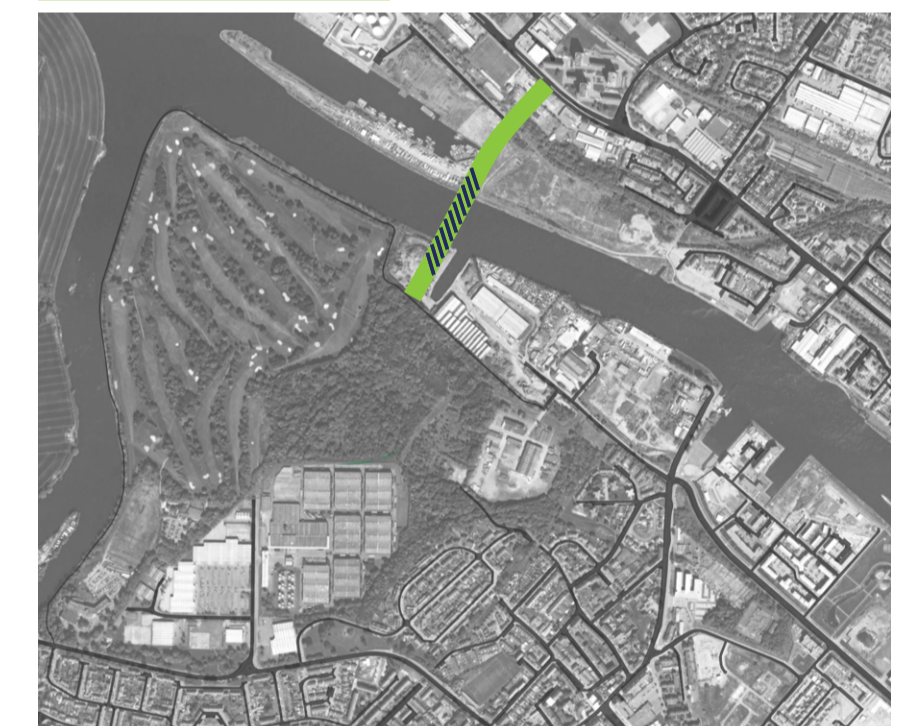
## CLYDE CROSSING CORRIDOR A

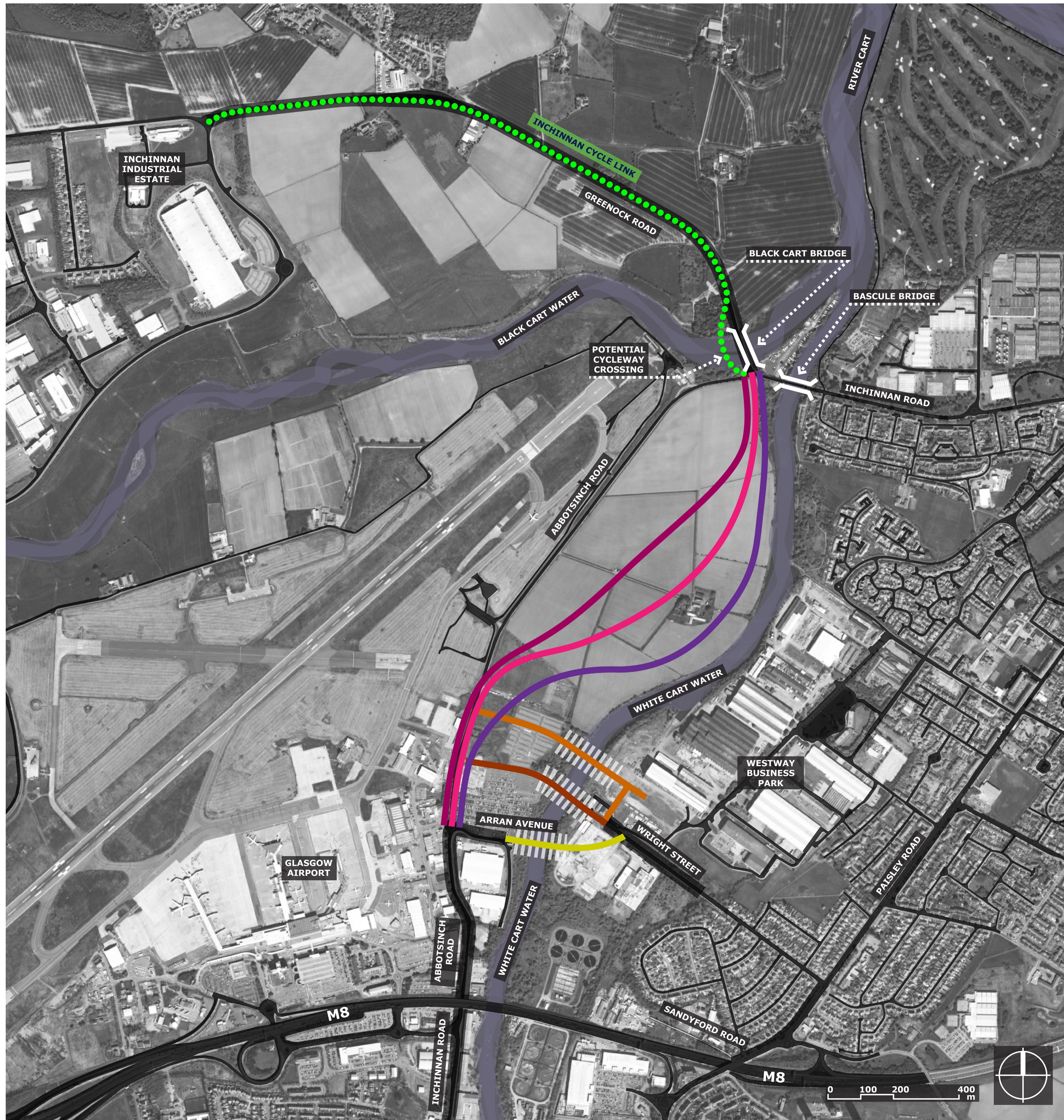


## CORRIDOR B



## CORRIDOR C

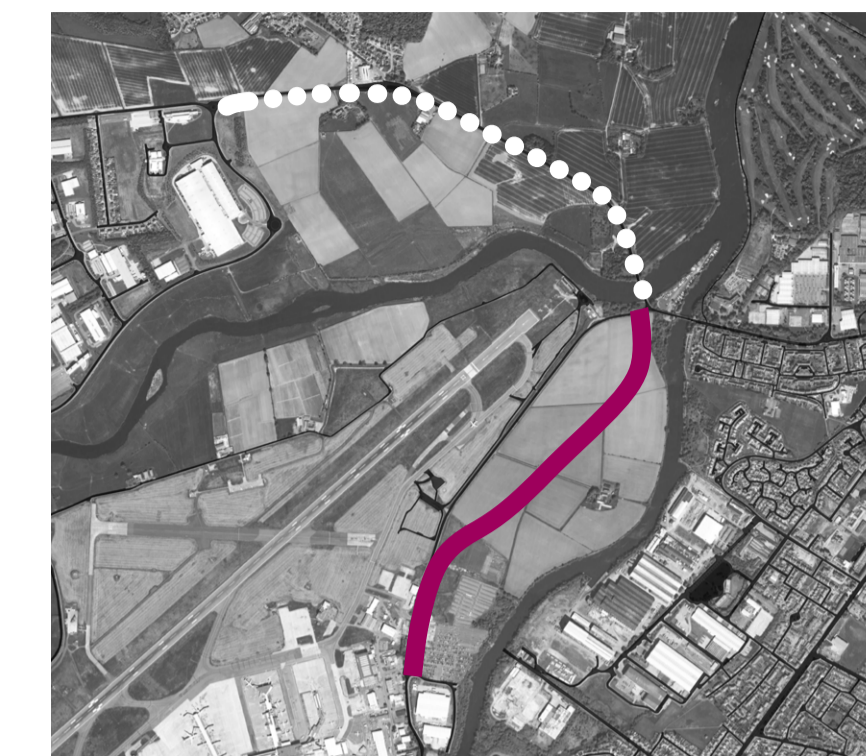




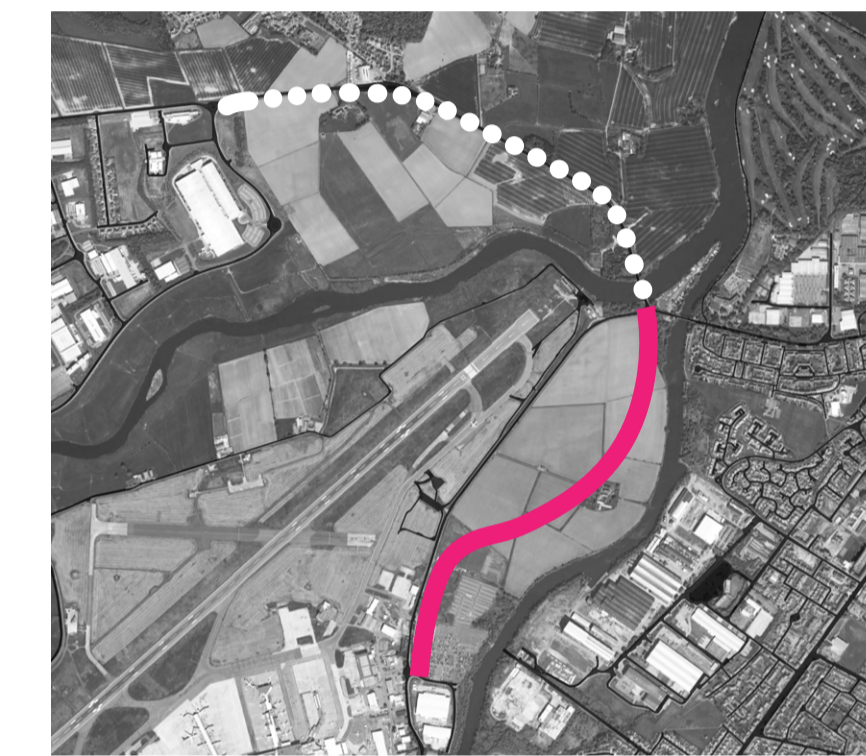
# GLASGOW AIRPORT INVESTMENT AREA

## NETHERTON FARM CORRIDOR

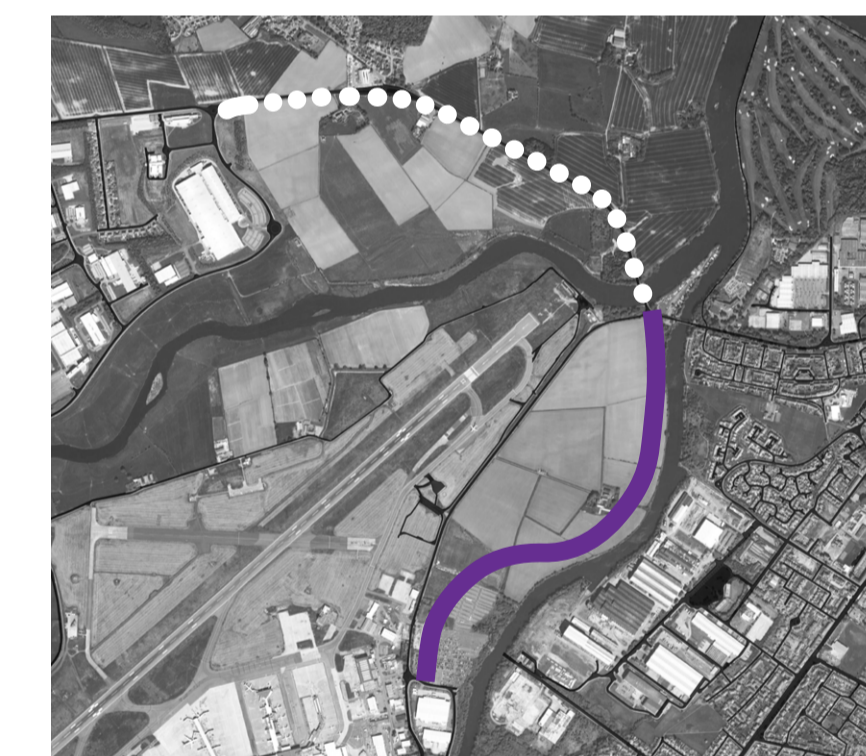
### OPTION 1



### OPTION 2



### OPTION 3



## WESTWAY BRIDGE

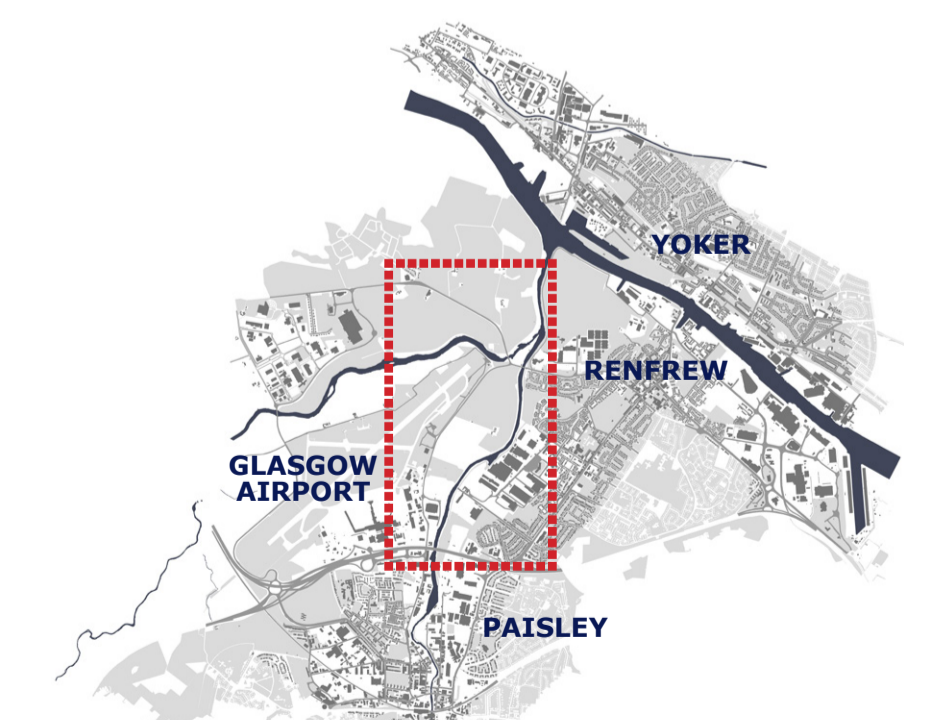
### OPTION 1



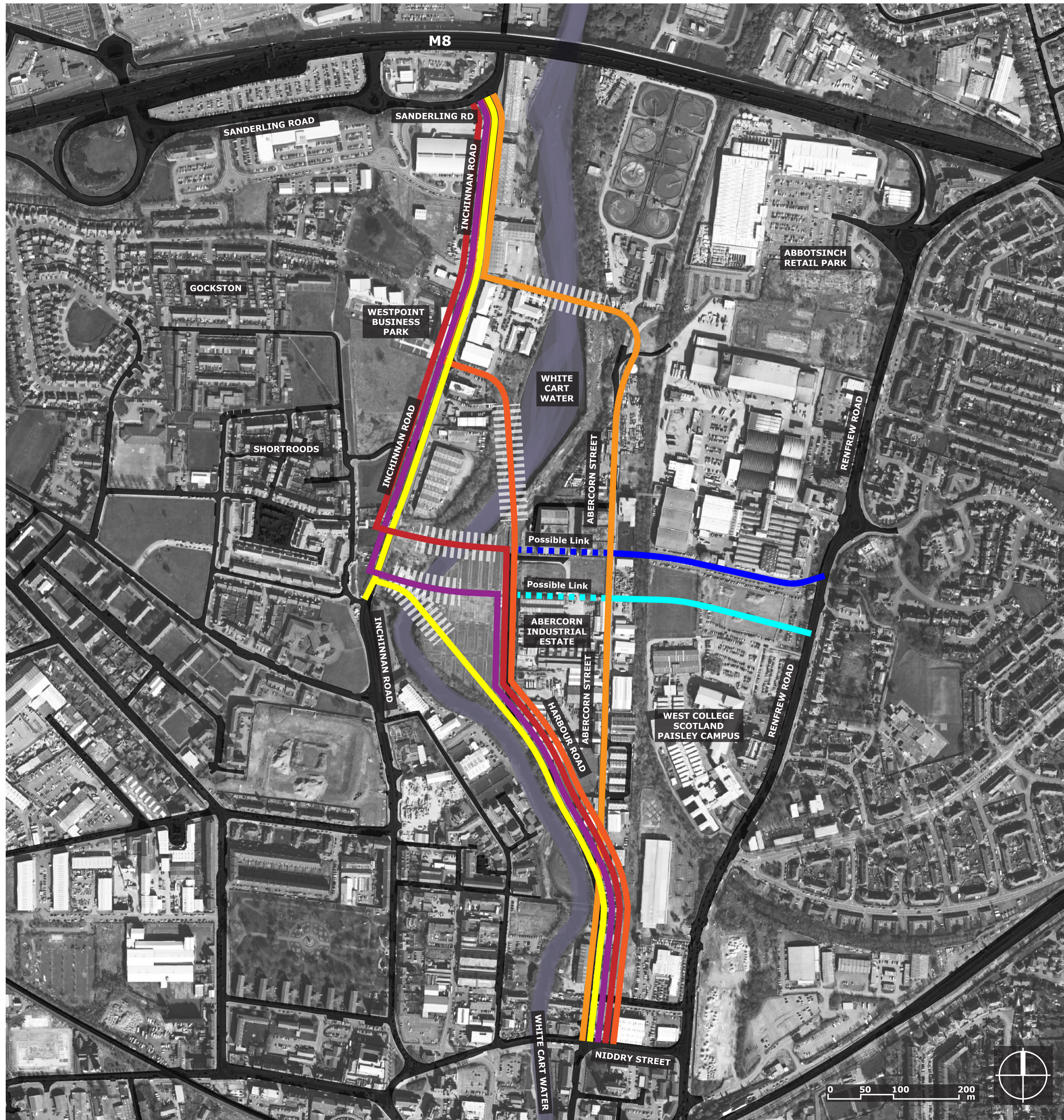
### OPTION 2



### OPTION 3



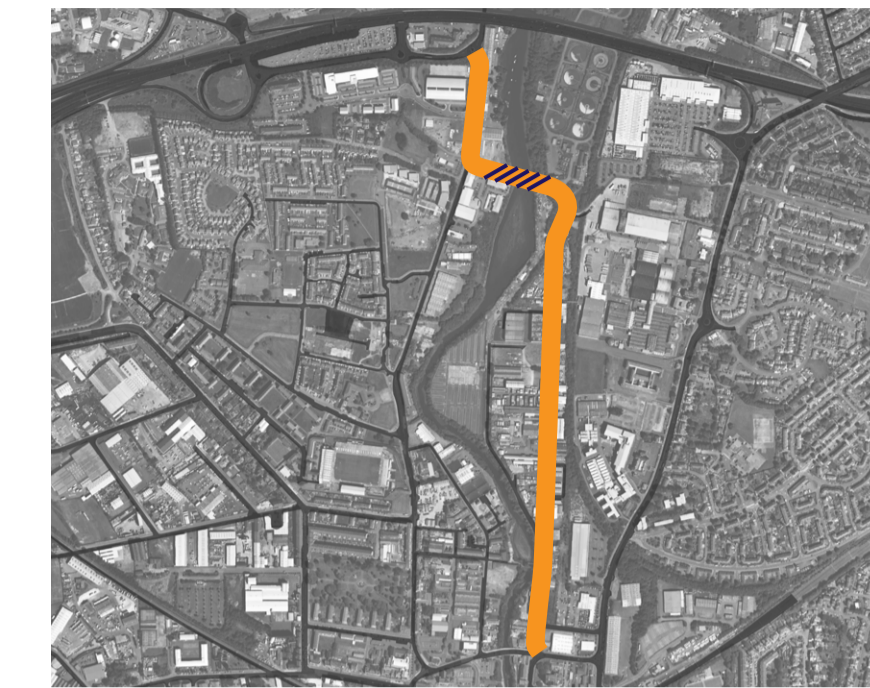




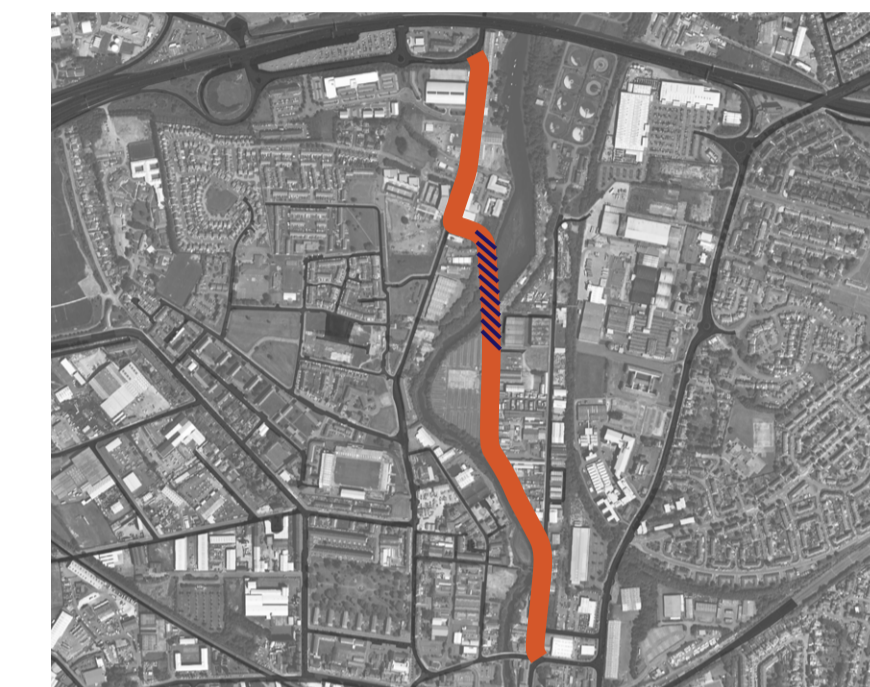
# GLASGOW AIRPORT INVESTMENT AREA

## GATEWAY CORRIDOR

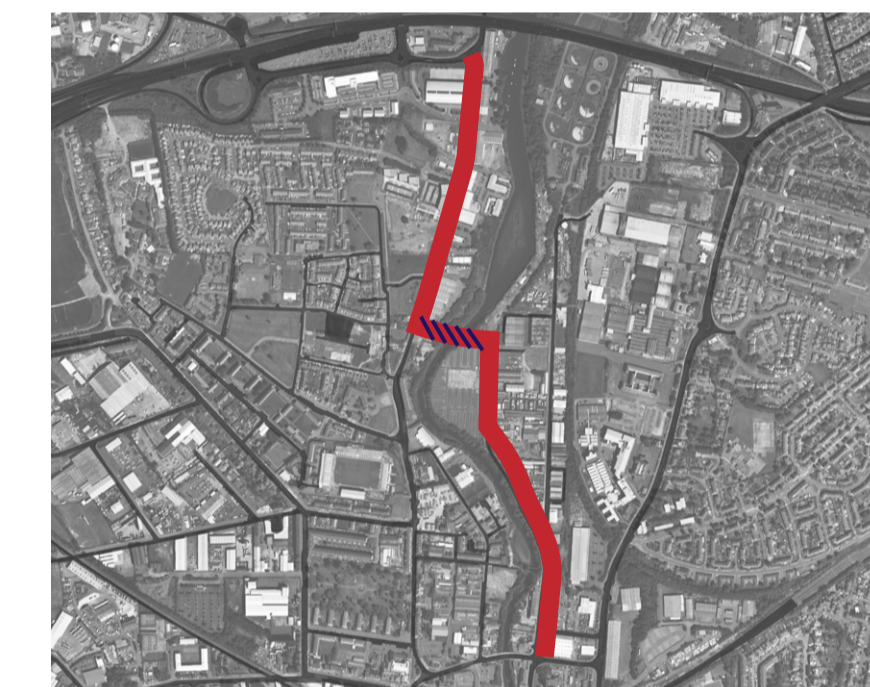
OPTION 1



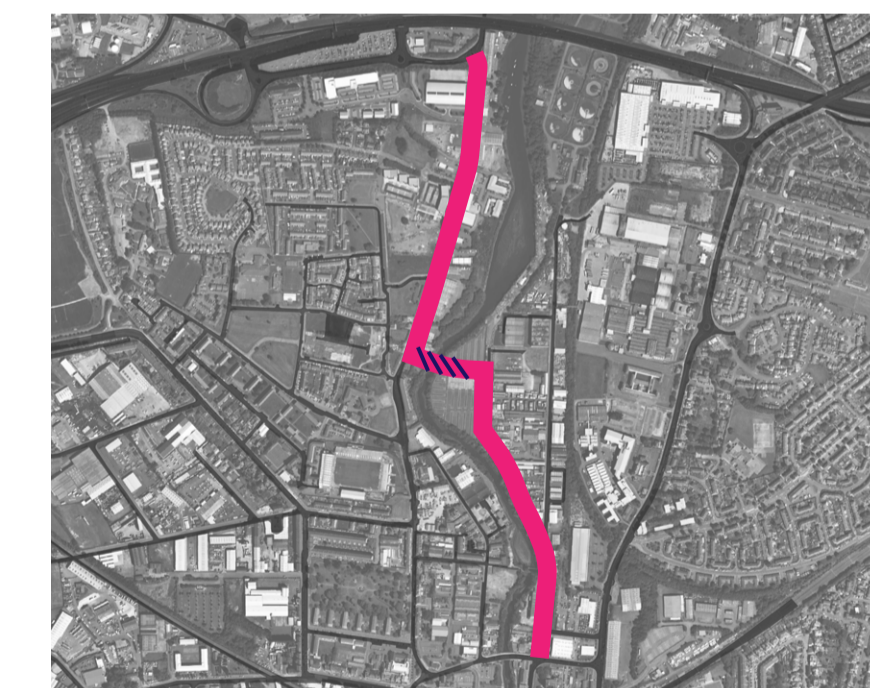
OPTION 2



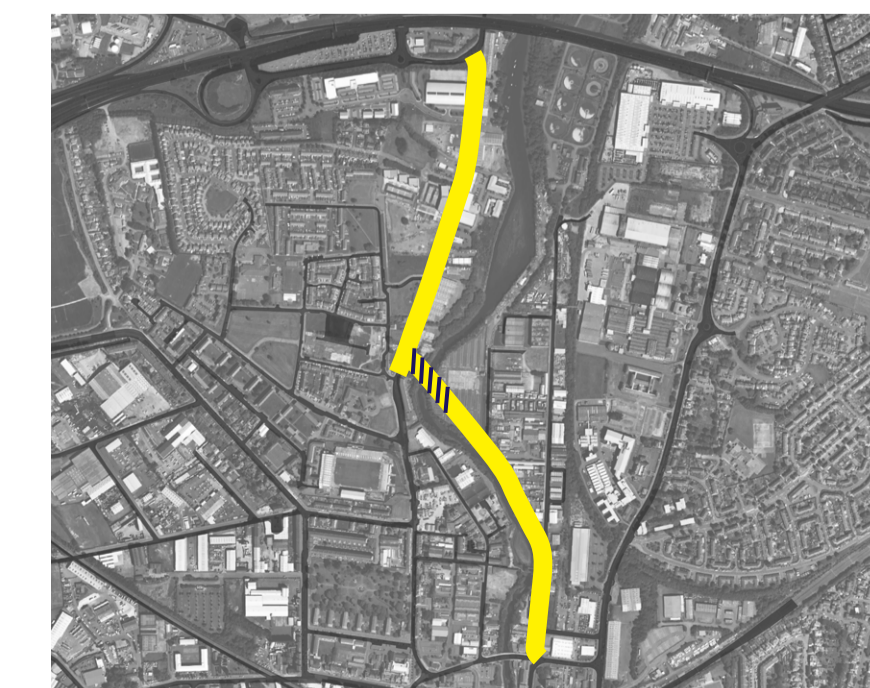
OPTION 3



OPTION 4

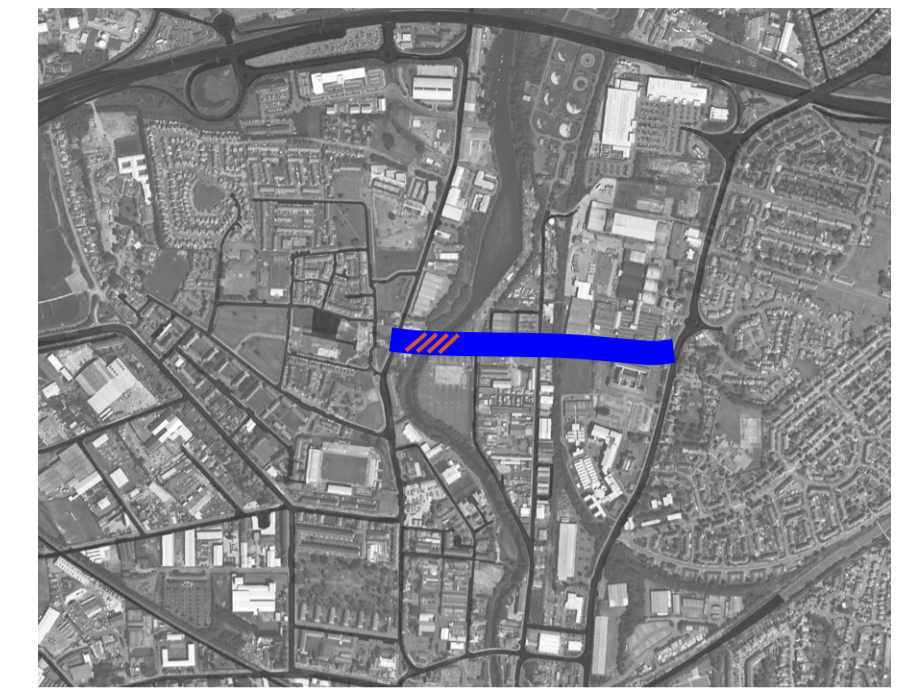


OPTION 5

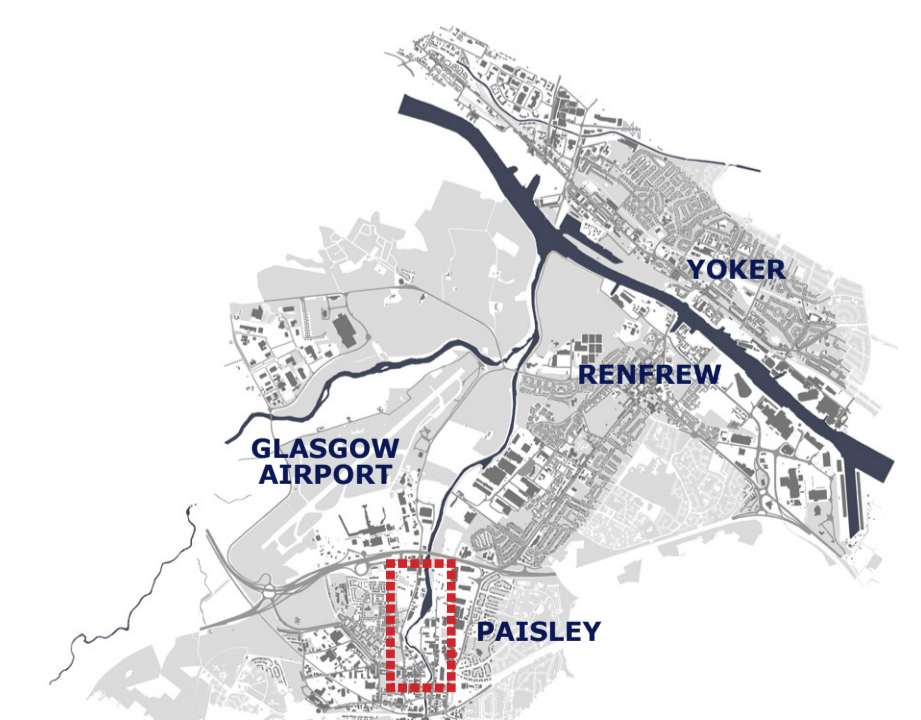


## RENFREW ROAD LINK CORRIDOR

OPTION 1



OPTION 2



# The Next Steps

- In June 2016, work will start on the design of the best performing options. Planning applications and the publishing of draft Orders will go ahead in the Spring of 2017.
- At that stage, the Statutory Process will start; providing the public with another opportunity to comment on, and contribute to, the project.
- Following a successful conclusion to the Statutory Process, the Orders will be confirmed and tenders for construction issued in early Autumn 2017.
- Construction is programmed to start in the Spring of 2018, with completion due in Summer 2020.

# Project Milestones



# Airport Access Project (AAP)

The £144.3m Airport Access Project will link Glasgow Airport, Paisley Gilmour Street Station and Glasgow Central Station. It will improve connections with the airport, help to relieve pressure on the roads and make travel easier for air passengers and airport employees. The new link is expected to help the airport to grow by offering better connections to the City Region and improving links with the wider transport network.

## The new connection will:

- offer air travellers and airport workers a modern, quick, reliable, easy and comfortable public transport option
- support Glasgow Airport's development and expansion as a key national development and gateway location
- maximise the potential of the Glasgow Airport Investment Area as a key strategic business location and centre for economic growth
- ensure that the new infrastructure supports other proposed investments in the area
- support local employment opportunities, local access to jobs and economic growth in the City Region

Initial studies considered a long list of options. A Tram Train came out as the best performer but we are also assessing the possibilities of a Personal Rapid Transport System. Our further appraisal will identify which option will better meet our infrastructure needs and provide the greatest support to our economic regeneration.

## Progress:

The Strategic Business Case for the AAP has already been approved by the City Deal Cabinet and the Outline Business Case is being developed. We are now working to identify the best route and type of connection and gather views from residents and businesses in the area. After that, we will complete the Outline Business Case and develop plans for the preferred option.

## Milestones

- The Outline Business Case will be submitted to the City Deal Cabinet in December 2016.
- We will then start detailed design and procurement work and go through all the necessary statutory processes.
- The Full Business Case will be submitted to the City Deal Cabinet in the Autumn of 2021.
- Construction will start early in 2022 and be complete by the end of 2024.
- The new service will be in operation by the summer of 2025.

