



**RENFREWSHIRE CHILDREN'S
SERVICES PARTNERSHIP**

Reach for a Better Future

Renfrewshire Integrated Children's Services Plan

Renfrewshire's strategy for improving
outcomes for children, young people
and their families.



2013-2016



Contents

| | | | |
|------------|--|---|---------|
| Foreword | | Councillor Jacqueline Henry, Chair of the Children and Young People Thematic Board..... | Page 5 |
| Section 1 | | Renfrewshire's vision for children | Page 6 |
| Section 2 | | Our approach to planning and delivering children's services | Page 8 |
| Section 3 | | Renfrewshire's children..... | Page 12 |
| Section 4 | | Outcomes for children and young people..... | Page 14 |
| Appendix 1 | | Improvement Plan..... | Page 16 |





Foreword

Children and young people are important to Renfrewshire's future well being and economic prosperity. As residents of the authority, they are also deserving of our protection, support and best endeavours on their behalf. Renfrewshire Council and our community planning partners are committed to improving outcomes for children, young people and their families.

The Integrated Children's Services Plan "Reach for a Better Future: Renfrewshire's Strategy for Improving Outcomes for Children, Young People and their Families" 2013–2016 has been developed on the basis of the information we have about children and young people in Renfrewshire and reflects our priorities, as outlined in the Renfrewshire Community Plan.

The Renfrewshire Community Plan contains the following vision for children:

"By 2023, we will get it right for every child and young person by ensuring that they live in a positive and inclusive environment, have the best start in life, are confident, healthy and free from disadvantage."

The Integrated Children's Services Plan indicates how we will work towards delivering this long term vision and explains how services working with children, young people and their families will provide support to achieve improved outcomes for Renfrewshire's children over the next three years.

The most significant influence on children making the best start in life is the care and nurture of their parents. Our universal services of education and health work to support parents to make a positive impact on children and young people. It is our aim to prevent problems or difficulties from arising where at all possible, but when they do, we want to act with parents to resolve issues as quickly and effectively as possible.

Reach for a Better Future outlines our approach based on prevention and early and effective intervention.

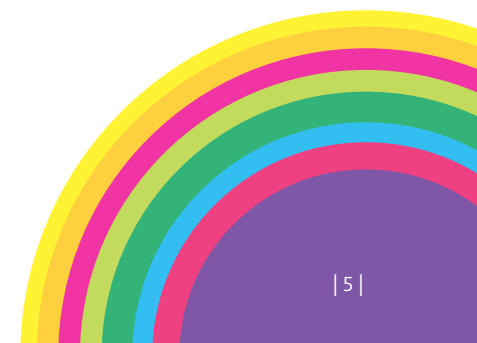
The prevention approach means that parents, with the support of services when needed, will continue to focus on positive outcomes for most children by stopping problems before they arise.

The second element of our approach is to identify and intervene early when problems do occur. Evidence and research shows that early and effective intervention improves outcomes for children, young people and their families.

Using these approaches will help services support families, children and young people to achieve the outcomes that all of our children deserve.

Councillor Jacqueline Henry

Chair of the Children and Young People Thematic Board



Section 1 | Renfrewshire's vision for children and young people

“By 2023, we will get it right for every child and young person by ensuring that they live in a positive and inclusive environment, have the best start in life, are confident, healthy and free from disadvantage.”



Renfrewshire's Community Plan sets out the long term vision for children. The Community Plan states:

"By 2023, we will get it right for every child and young person by ensuring that they live in a positive and inclusive environment, have the best start in life, are confident, healthy and free from disadvantage."

The Community Plan aims to ensure the following outcomes for children and young people in Renfrewshire will:

- Have the best start in life – be ready to learn, supported to achieve and be ambitious throughout and beyond their school lives.
- Live in a safe and secure, stable and nurturing environment at home and in the community – where their rights are respected, they are free from poverty and neglect and supported to be resilient and to thrive.
- Feel confident and responsible – able to participate fully in learning and in their wider community and take part in opportunities which meet their needs, interests and aspirations.
- Have good physical, emotional and mental health and well-being.

This integrated children's services plan outlines how we will work towards delivering the long term vision and outcomes over the next three years (from 2013–2016). We believe that every child in Renfrewshire matters and we want their journey to adulthood to be a safe, healthy and nurturing experience. Every child should be respected and supported to achieve their full potential. Services working with children and their families will work together to achieve this.



Section 2 | Our approach to planning and delivering children's services



The purpose of this plan

Reach for a Better Future – Renfrewshire's Integrated Children's Services Plan 2013–2016 has been prepared to ensure that services working with children and families work together to achieve our vision. This plan sets out the strategic agenda for improving outcomes for children.

It sets out how services will work together to improve outcomes for children, young people and their families in Renfrewshire. It will focus only on the activities provided on a multi-agency basis to Renfrewshire's children and their families. Services being provided by individual services and agencies will be detailed in individual service/operational plans.

The plan will be monitored by Renfrewshire Community Planning Children and Young People's Thematic Board and will be reported to Renfrewshire's Community Planning Partnership Board and to the Scottish Government via the Community Plan/ Single Outcome Agreement.

Planning and developing our strategy

The previous integrated children's services plans prepared by Renfrewshire Children's Services Partnership set out how we wanted to improve the lives of children on a partnership basis. Those plans were developed using information we held in relation to the child population included demographic and administrative data. Those plans have informed and influenced the development of the present plan which has been enhanced by the addition of information provided by children, young people and their families.

We believe that outcomes for children and young people are the most important aspect of what we do. In line with Article 12 and Article 5 of the United Nations Convention on the Rights of the Child we agreed on the outcomes we need to focus on by asking children, young people and their families about their views and needs.

Renfrewshire Children's Services Partnership reviewed and changed the way we approached the planning, delivery and evaluation of children's services in June 2010. Through the Achieving Step Change approach we

set out to deliver significant changes to the way in which children's services are provided in Renfrewshire, with the high level objective of improving outcomes for children.

Working with the Social Research Unit at Dartington we reviewed how we approach planning and intervention to support and improve outcomes for children and young people in Renfrewshire. The Social Research Unit is an independent charity which aims to improve outcomes for children by using information provided directly by children and to increase evidence of what works in improving outcomes in the design and delivery of services for children and their families.

Our work with the Social Research Unit is unique in Scotland. We have identified the outcomes that we want to achieve in partnership with children and families. We have done this by:

- Carrying out an in-depth analysis of need, policy drivers and current resources.
- Carrying out development work with senior managers to agree a common language approach to be introduced across our services.

- Engaging with children and young people to secure their views.
- Engaging with the parents and carers of children from birth to eight years.
- Identifying the outcomes we should focus on.
- Identifying approaches and interventions which make a difference.

Renfrewshire defines an outcome as "the impact of activities on children's development". Outputs are defined as "the numbers accessing services and the level of activity undertaken". Renfrewshire will report on both outcomes and outputs in showing the difference our services make in improving the lives of children and young people.

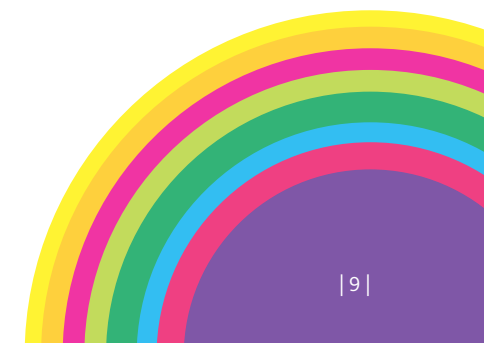
In order to ensure that resources are used in the most effective manner Renfrewshire Children's Services Partnership agreed to focus on the developmental outcomes which if they are achieved will contribute to a successful childhood and improve the chances of the young person as they move into adulthood.

The developmental areas on which we will focus are: behaviour; physical health; emotional well-being; educational skills and attainment and social relationships.

To help us understand the needs of our children and young people 12,789 children and young people aged from eight to seventeen years, and 434 parents/carers of children from birth to eight years completed an online questionnaire. The results of the questionnaire provided high quality data on the well-being of children and young people in Renfrewshire. Combining the information provided by the children and young people with the administrative data already held by partners allowed us to identify the priority outcomes for the partnership to develop.

The information provided by children and their parents told us that we need to focus on a small number of priorities for Renfrewshire's children between 2013 and 2016. These priorities – along with individual service/operational plans – will help us work towards ensuring that the following outcomes set out in the community plan are achieved by 2022:

- Maintaining the strong health and development of the majority of children;
- Supporting children in their local communities and with their families, where safe and appropriate;
- Improving behaviour, physical health and emotional wellbeing; and
- Improving the developmental outcomes for children entering primary school.



Planning and delivering services – Getting it Right for Every Child

All services working with children and their families in Renfrewshire are committed to embedding the principles of "Getting it Right for Every Child" (GIRFEC) in the day to day work with children, young people and their families.

In Renfrewshire, GIRFEC underpins all of our work with children, young people and their families. GIRFEC places the needs of children and young people at the centre, ensures a partnership through their voices being heard and listened to and ensures plans are in place to provide the right support for children at the right time.

Through the GIRFEC approach we aim to ensure that every child in Renfrewshire is:

- Safe by protecting them from abuse, neglect or harm;
- Healthy by ensuring the highest standards of physical and mental health;
- Achieving by boosting their skills, confidence and self-esteem;

- Nurtured by having a warm, caring and stimulating place to live and grow;
- Active through opportunities to take part in a wide range of activities building a fulfilling and happy future;
- Respected by being given a voice and involved in the decisions that affect their well-being;
- Responsible by taking an active role within their schools and communities and displaying good behaviour; and
- Included by having access to help and guidance to overcome social, educational, physical and economic inequalities.

Renfrewshire has made considerable progress in embedding GIRFEC in all work with children, young people and their families. Over the next three years we will ensure that GIRFEC underpins all policy, processes and procedures in place to support children, young people and their families. We will continue to utilise the GIRFEC Maturity Model to track our progress in implementing GIRFEC. We will build on our present position to develop our GIRFEC approach to ensure we meet

the requirements and aspirations of the Scottish Government's Children and Young People Bill which will provide a legislative basis for GIRFEC.

By embracing GIRFEC our services will work in partnership with children and young people and prevent problems from developing. When problems do develop we will respond quickly and effectively to address any challenges resulting in coordinated support where this is required to improve their well-being. By the end of the period covered by this plan GIRFEC will be fully embedded in Renfrewshire and will ensure that outcomes for children and young people improve allowing them to reach their full potential.

Planning and delivering services – Children's Rights

Reach for a Better Future – Renfrewshire's Integrated Children's Services Plan 2013–2016 and our work with children, young people and their families is underpinned by the United Nations Convention on the Rights of the Child (UNCRC). All services and agencies will work together to consider and promote the rights of children and young people.

Planning and delivering services – Universal and targeted approach

Within Renfrewshire we are committed to ensuring that children and young people receive the right service, at the right time and at the right level. Our approach comprises of universal services which are available as a right for all children and young people and targeted services for children and young people who have a need identified through an assessment.

Planning and delivering services – Support for parents

Renfrewshire Children's Services Partnership recognises that most parents do a good job of caring and supporting their children most of the time. We recognise however that some parents will need support and we will provide the appropriate service as part of our strategy to improve outcomes for children and young people.

Planning and delivering services – Priority Groups

Renfrewshire Children's Services Partnership is committed to improving the lives of all children in our area and for whom we have responsibility. We will however target resources to ensure that the opportunity and developmental gap between our most prosperous children and our most disadvantaged children is reduced. We will do this by increasing the support and opportunities for our most disadvantaged children through coordinated and consistent support.

The Early Years

Renfrewshire Children's Services Partnership has agreed an Early Years Strategy which will ensure prevention and early intervention as the bedrock of our work to support children and their families. The Early Years Strategy promotes:

- a family centred approach in two localities and test this before extending to the whole of Renfrewshire;
- a family centred outreach approach; and
- support for families with older children.

Looked After and Accommodated Children

Renfrewshire has a high number of looked after and accommodated children. Over the life of this plan we will continue to work to improve the opportunities and outcomes for looked after and accommodated children. We will achieve this through improved partnership with the children and young people and by developing further our approach to corporate parenting. The agenda in this area will be set jointly with children and young people through the Children's Champions Board.

Young Carers

Young carers often have poorer outcomes than other children and young people. Recognising this Renfrewshire Children's Services Partnership has identified young carers as a group for whom we will give additional focus. Our services will work together to identify young carers and provide them with the right level of support to ensure that they develop to their full potential.



Section 3 | Renfrewshire's children



Population breakdown

The number of children aged 0 to 15 years in Renfrewshire is 30,215, comprising 17.71% of the total population in the area (170,650).¹ The percentage of children locally is slightly higher than the overall Scottish average of 17.38%. The estimated population of young people aged 16 to 19 years in Renfrewshire is 4.80% (8,197), slightly lower than the Scottish percentage of 4.92%.

Children living in poverty

The Renfrewshire community is diverse however we know that children and young people living in poverty often have poorer outcomes than their more affluent neighbours. In 2013 figures show that 19% of children in Renfrewshire are living in poverty with the intensity varying considerably from 7% to 31% in individual council wards.

¹ <http://www.sns.gov.uk/Reports/Population>

Looked After Children

On 31 July 2012 Renfrewshire there were 786 looked after children in Renfrewshire, the fourth highest number in Scotland. The looked after population in Renfrewshire was as follows:

- 269 looked after at home;
- 140 looked after in local authority foster care;
- 110 looked after in independent sector foster care;
- 4 looked after in pre-adoptive placements;
- 46 looked after in local authority residential children's units; and
- 24 looked after in independent residential children's units.

A comparison of the school performance in 2010/11 of looked after children in Renfrewshire and across Scotland shows that Renfrewshire has a better attendance record (92.5% vs 88.6%), lower exclusion rate (230 vs 326 per 1,000) and a higher percentage of looked after children at positive destinations at the nine month follow up survey (63% vs 55%) than that experienced across Scotland.

However the average tariff score (72 vs 79) and the percentage of looked after children at positive destinations at the initial three month survey (53% vs 64%) are below the Scottish figures.²

Our research on our looked after children shows that they have poorer physical health, emotional wellbeing and behaviour than the average child in Renfrewshire and in the UK. Agencies working in Renfrewshire are committed to improving outcomes for our looked after children. Our corporate parenting approach is key to helping Renfrewshire achieve the improvement in outcomes for this group of children and young people.



² <http://www.scotland.gov.uk/Publications/2012/06/3860/downloads>
Educational Outcomes for Scotland's Looked After Children 2010/11

Section 4 | How we will deliver

The priorities identified through consultation with children, young people and their families will contribute to achieving the outcomes set out in Renfrewshire's Community Plan for children and young people in the following ways:

Outcome 1

Have the best start in life – be ready to learn, supported to achieve and be ambitious throughout and beyond their school lives.

We will do this by improving the developmental outcomes for children entering primary school and by maintaining the strong health and development of the majority of children.

Outcome 2

Live in a safe and secure, stable and nurturing environment at home and in the community – where their rights are respected, they are free from poverty and neglect and supported to be resilient and to thrive.

We will do this by supporting children and young people in their local communities and with their families where safe and appropriate.

Outcome 3

Feel confident and responsible – able to participate fully in learning and in their wider community and take part in opportunities which meet their needs, interests and aspirations.

We will do this by improving the developmental outcomes for children entering primary school.

Outcome 4

Have good physical, emotional and mental health and well-being.

We will do this by improving behaviour, physical health and wellbeing and by improving the developmental outcomes for children entering primary school.

To help us achieve our vision, deliver on these priorities between 2013 and 2016 and ultimately deliver the high level outcomes set out in the community plan by 2022, we will:

- Build on present effective services;
- Continue to develop our early intervention and prevention approach³;
- Shift resources from high cost reactive services towards prevention and early intervention;
- Embed the success of the Early Years strategy by replicating good practice across the local authority area;
- Continue to embed evidence-based programmes including Triple P, Incredible Years, Family Nurse Partnership, and Functional Family Therapy;
- Build on our approach to GIRFEC by introducing a standardised screening tool for targeting and engaging children, young people and their families with services;
- Develop further our approach to corporate parenting; and
- Measure the impact of our approach on outcomes for children and young people and their families by undertaking further surveys of all children during 2015 and 2017.

³ We define prevention as "stopping a problem before it develops" and early intervention as "getting in at the first sign of a problem with the right service".



Appendix 1 | Improvement Plan



Overarching Priority Improvement Areas/ Activity

Supporting the Families First approach and Early Years Strategy to ensure that the Partnership continues to adopt early interventions for: parenting; literacy and numeracy; skills for life and work; health and wellbeing; social and emotional behaviours.

1. Assess the success of existing evidence based parenting programmes including: Incredible Years, Triple P, PATHS, FAST and Functional Family Therapy.
2. Full implementation of Curriculum for Excellence and the new national qualifications.
3. Embed fully the Getting it Right for Every Child approach.
4. Ensure the Partnership is prepared for forthcoming Joint Children's Services Inspections.

Outcome 1

Our children and young people have the best start in life – are ready to learn, supported to achieve and are ambitious throughout and beyond their school lives.

| Proposed Actions | | Lead organisation and group |
|---|---|---|
| Early Years Collaborative Stretch Aims | | |
| Aim 1 | Ensure that women experience positive pregnancies which result in the birth of more healthy babies as evidenced by a reduction of 15% in the rates of stillbirths (from 4.9 per 1,000 births in 2010 to 4.3 per 1,000 births in 2015) and infant mortality (from 3.7 per 1,000 live births in 2010 to 3.1 per 1,000 live births in 2015). | |
| | Lead officer to establish a working group to analyse data and develop actions to ensure we meet the stretch aim targets | Renfrewshire Community Health Partnership – Early Years Steering Board |
| | Support and facilitate the implementation of the Family Nurse Partnership | Renfrewshire Community Health Partnership – Family Nurse Partnership Steering Group |
| Aim 2 | Ensure that 85% of all children within each Community Planning Partnership have reached all of the expected developmental milestones at the time of the child's 27–30 month child health review, by end–2016. | |
| | Lead Officer to establish a working group to analyse data and develop actions to ensure we meet the stretch aim targets | Renfrewshire Community Health Partnership – Early Years Steering Board |
| | Early identification and information sharing to intervene effectively at the right time | Renfrewshire Community Health Partnership – Early Years Steering Board |
| Aim 3 | Ensure that 90% of all children within each Community Planning Partnership have reached all of the expected developmental milestones at the time the child starts primary school, by end–2017. | |
| | Lead officer to establish a working group to analyse data and develop actions to ensure we meet the stretch aim targets | Education and Leisure Services – Early Years Steering Board |

| Proposed Actions | | Lead organisation and group |
|---|--|--|
| Aim 4 | Ensure that 95% of all children within each Community Planning Partnership have reached all of the expected developmental milestones at the time the child ends Primary 4, by end of 2021. | |
| | Lead officer to establish a working group to analyse data and develop actions to ensure we meet the stretch aim targets | Education and Leisure Services – Early Years Steering Board |
| Increase in the average tariff score of the lowest attaining 20% of S4 pupils to 82 | | |
| | Identify early our lowest performing 20% of pupils | Education and Leisure Services – Renfrewshire Children's Services Partnership |
| | Investigate best practice examples | Education and Leisure Services – Renfrewshire Children's Services Partnership |
| | Ensure that appropriate CPD and training opportunities are available for all staff in health and wellbeing and respond appropriately | Renfrewshire Community Health Partnership – Renfrewshire Children's Services Partnership |
| 1.3 Increase in the average tariff score of looked after young people to 82 | | |
| | Ensure that developments to streamline assessment and planning within the GIRFEC framework are extended to include our looked after children | Social Work – GIRFEC Steering Group |
| | Evaluate the deployment of current resources for looked after children to ensure that we are making a difference to children and young people who are looked after at home | Social Work – Corporate Parenting Steering Group |
| | Provide assistance to foster carers/residential staff to support children and young people with their learning | Social Work – Renfrewshire Children's Services Partnership |
| | Evaluate current LAC practice and develop proposals for improving attainment including PDSA small tests of change | Education and Leisure Services – Corporate Parenting Steering Group |
| | Continuously track the progress of LAC young people through all ages and stages to ensure early intervention can be provided | Education and Leisure Services/Social Work – Corporate Parenting Steering Group |

| Proposed Actions | Lead organisation and group |
|--|---|
| 1.4 94% of school leavers will be in positive and sustained destinations | |
| Enhance employability support and skills for work programme in schools and ensure that they match post school initiatives | Education and Leisure Services/SDS – Skills for Success Group |
| Support post school training programmes e.g. Activity Agreements and The Recruit | Development and Housing Services – Renfrewshire Employability Partnership |
| Increase the number of public sector employment and training opportunities for young people | Development and Housing Services – Renfrewshire Employability Partnership |
| Increase the provision of work experience opportunities in schools | Skills Development Scotland – Skills for Success Group |
| Provide job search advice tailored to students on course completion | Development and Housing Services – Renfrewshire Employability Partnership |
| Encourage young people to take up volunteering opportunities to enhance their employability | Engage Renfrewshire – Renfrewshire Forum for Empowering Communities/ Skills for Success Group |
| Improve communication between partners to gather and track information on our children and young people | Education and Leisure Services – Skills for Success Group |
| Provide support to young people to ensure that they make a smooth transition from school into a positive and sustainable destination | Skills Development Scotland – Skills for Success Group |
| Work with partners to Implement the recommendations of the Wood Commission Report when published | Education and Leisure Services – Skills for Success Group |
| 1.5 85% of looked after young people will be in positive and sustained destinations | |
| Build on the existing Pathway Plans | Skills Development Scotland – Corporate Parenting Steering Group |
| Build on the Corporate Parenting work to develop clear plans for our LAC young people to improve their outcomes | Social Work – Corporate Parenting Steering Group |

| Proposed Actions | Lead organisation and group |
|---|--|
| Provide early identification and targeting of support | Social Work – Corporate Parenting Steering Group |
| Raise awareness of Corporate Parenting role and responsibilities across all partners | Social Work – Corporate Parenting Steering Group |
| Expand the existing initiative to prepare young people leaving care for independent living and avoiding homelessness to include other services and partners | Development and Housing Services – Corporate Parenting Steering Group |
| Increase the number targeted training places/ internships | Development and Housing Services – Corporate Parenting Steering Group |
| Establish baseline of SDS key workers engagement and prioritise the most effective deployment | Skills Development Scotland – Skills for Success Group |
| Act on the priorities identified by the young people at Children’s Champion Board | Social Work – Corporate Parenting Steering Group |
| Establish a baseline for mentoring activity for LAC young people | Development and Housing Services – Corporate Parenting Steering Group |
| Provision of supported volunteering placements for LAC young people | Engage Renfrewshire – Renfrewshire Forum for Empowering Communities |
| Make leisure opportunities more accessible for LAC and their peers | Renfrewshire Leisure – Corporate Parenting Steering Group |
| 1.6 Reduce to 5% babies with a low birth weight (<2500g) | |
| Increase the uptake of the smoking cessation service | Renfrewshire Community Health Partnership – Tobacco Alliance |
| Support the development and delivery of the maternal and infant nutrition framework | Renfrewshire Community Health Partnership – Maternal and Infant Nutrition Framework (Renfrewshire) |
| Develop healthy eating and cooking initiatives within our communities | Renfrewshire Community Health Partnership – Physical Activity and Nutrition Group |

| Proposed Actions | Lead organisation and group |
|--|--|
| 1.7 25% of babies will exclusively be breast fed at 6–8 weeks | |
| Raise awareness of the benefits of breastfeeding | Renfrewshire Community Health Partnership – Maternal and Infant Nutrition Framework (Renfrewshire) |
| All partners to work towards achieving the Breastfeeding Welcome Award | Renfrewshire Community Health Partnership – Maternal and Infant Nutrition Framework (Renfrewshire) |
| Explore opportunities for breastfeeding volunteers to move into employment in a planned way | Renfrewshire Community Health Partnership – Maternal and Infant Nutrition Framework (Renfrewshire) |
| Breastfeeding resource pack to be used in all Renfrewshire Secondary School and extending in residential units and other youth services Development of breastfeeding pack for Primary Schools | Renfrewshire Community Health Partnership – Maternal and Infant Nutrition Framework (Renfrewshire) |
| Use breast feeding volunteers to engage with women during pregnancy to provide support | Renfrewshire Community Health Partnership – Maternal and Infant Nutrition Framework (Renfrewshire) |

Outcome 2

Live in a safe, stable nurturing environment at home and in the community – where their rights are respected, they are free from poverty and neglect and supported to be resilient and to thrive.

| Proposed Actions | Lead organisation and group |
|--|---|
| 2.1 Increase the perception score of not being bullied amongst secondary school pupils to 96 2.2 Increase the perception score of not being bullied amongst primary school pupils to 96 | |
| Ensure that the Promoting Positive Relationships policy is adopted by all schools and community planning partners | Education and Leisure Services – Renfrewshire Children’s Services Partnership |
| Evaluate existing evidence based programmes | Education and Leisure Services/Social Work – Renfrewshire Children’s Services Partnership |
| Agree a programme of engagement with Police Scotland and our schools to support young people to develop positive relationships | Police Scotland – Community Safety and Public Protection Steering Group |
| Explore opportunities to develop young people’s resilience and self esteem | Renfrewshire Community Health Partnership – Renfrewshire Children’s Services Partnership |

| Proposed Actions | Lead organisation and group |
|--|---|
| 2.3 No more than 15% of children to be living in poverty in any area | |
| Support the work of the Tackling Poverty Commission | Finance and Corporate Services – Tackling Poverty Commission |
| Implement the agreed actions arising from the recommendations of the Tackling Poverty Commission on conclusion of its findings, as directed by the Community Planning Partnership Board. | Finance and Corporate – Children and Young People Board |
| Support the Healthier, Wealthier Children Initiative and explore opportunities to expand to include early years and new families | Renfrewshire Community Health Partnership – Healthier Wealthier Children Local Implementation Group |
| Early identification of young carers to ensure necessary support from all partners | Education and Leisure Services – Renfrewshire Children's Services Partnership |
| 2.4 15% reduction in the number of children and young people placed on the Child Protection Register affected by parental substance misuse | |
| Support and implement the integrated assessment process for early intervention for children, young people and families affected by problematic alcohol and drugs misuse | Social Work – GIRFEC Steering Group |

Outcome 3

Feel confident and responsible – able to participate fully in learning and the wider community and take part in opportunities which meet their needs, interests and aspirations.

| Proposed Actions | Lead organisation and group |
|--|---|
| 3.1 Increase the reported school perception score amongst our secondary school pupils to 69 3.2 Increase the reported school perception score amongst our primary school pupils to 85 3.3 Reduce the percentage of secondary pupils with poor engagement with school to 12% 3.4 Reduce the percentage of primary school pupils with poor engagement with school to 4% | |
| Investigate opportunities to meet needs and aspirations through interventions such as life skills training | Social Work – Renfrewshire Children's Services Partnership |
| Agree a plan for the frequency of epidemiological testing of pupils perceptions | Social Work – Renfrewshire Children's Services Partnership |
| Undertake an analysis of the perception scores | Social Work – Renfrewshire Children's Services Partnership |
| 3.5 15 % reduction in the number of days lost per 1,000 secondary pupils through exclusion 3.6 15 % reduction in the number of days lost per 1,000 primary pupils through exclusion | |
| Explore multi agency in school support provisions for children at risk of exclusion | Education and Leisure Services – Renfrewshire Children's Services Partnership |
| 3.7 30% increase in the number of children and young people participating in sporting, cultural and citizenship activities | |
| Increase the profile of youth volunteering opportunities | Engage Renfrewshire – Renfrewshire Forum for Empowering Communities |
| Support and develop community led health initiatives | Renfrewshire Community Health Partnership – Renfrewshire Forum for Empowering Communities |

Outcome 4

Have good physical, emotional and mental health and wellbeing.

| Proposed Actions | Lead organisation and group |
|--|---|
| 4.1 Increase the reported physical health score of our secondary school pupils to 78 4.2 Increase the reported physical health score of our primary school pupils to 85 4.3 Increase the reported physical health score of our pre-school pupils | |
| Disseminate the results of the Health and Wellbeing results and work with schools to develop action plans | Renfrewshire Community Health Partnership – Renfrewshire Children's Services Partnership |
| Improve support to local sports groups and clubs | Engage Renfrewshire – Renfrewshire Forum for Empowering Communities |
| Support and promote the Active Children Eating Smart (ACES) project | Renfrewshire Community Health Partnership – Community Care, Health and Wellbeing |
| 4.4 8% reduction of secondary school pupils reporting poor pro-social behaviour 4.5 2 % reduction of primary school pupils whose parents report that their child has poor pro-social behaviour | |
| Investigate opportunities to increase the provision of therapeutic and counselling support to help young people recover from abuse, neglect, trauma etc. | Social Work – Renfrewshire Children's Services Partnership |
| Continue to support evidence based parenting programmes | Social Work/Education and Leisure Services/Renfrewshire Community Health Partnership – Renfrewshire Children's Services Partnership |
| 4.6 Reduce obesity levels in children in Primary 1 to 7.4% | |
| Mainstream the Active Choices Programme in primary schools | Education and Leisure Service – Community Care, Health and Wellbeing |

| Proposed Actions | Lead organisation and group |
|---|---|
| Awareness raising campaign targeted at pre-five and family centres | Education and Leisure Services – Early Years Strategy Group |
| Support Eat Well to Play Well in pre5 centres and nurseries | Renfrewshire Community Health Partnership/Education and Leisure Services – Renfrewshire Physical Activity and Nutrition Group |
| 4.7 63.1% of children in Primary 1 will be without decayed, extracted or filled teeth | |
| Continue to promote and develop the Childsmile Programme | Renfrewshire Community Health Partnership – Renfrewshire Oral Health Steering/ Implementation Group |
| 4.8 25% reduction in the rate of pregnancies for those under 16 years of age (rate per 1,000 population) | |
| Provide and promote parents' workshops on sexual health | Renfrewshire Community Health Partnership – Sexual Health JPIG |
| Continue to support the roll out and maintenance of the Relationships, Sexual Health and Parenthood Education Pack (RSHPE) | Education and Leisure Services – Sexual Health JPIG |
| Support and encourage teachers in delivering the RSHPE and to attend relevant training opportunities, ensuring they are delivering lessons accurately and confidently | Renfrewshire Community Health Partnership – Sexual Health JPIG |
| Sexual health and general health engagement included as part of the Diversionary Programmes | Community Resources – Education, Diversion and Engagement Group |
| Improve access and availability of information on sexual health and promotion of free condom service | Renfrewshire Community Health Partnership – Sexual Health JPIG |
| Explore opportunities for young people to be involved in the promotion of sexual health/youth information services | Renfrewshire Community Health Partnership – Sexual Health JPIG |





**RENFREWSHIRE CHILDREN'S
SERVICES PARTNERSHIP**