



Renfrewshire  
Council

# Hand Hygiene Guidance



# Hand Sanitiser Use

## When to use hand sanitiser

We're all washing our hands more frequently than ever before, some are using alcohol base hand sanitiser.

We should be mindful to be only be using the hand sanitiser where we do not have access to soap and running water, the use of soap and running water several times a day is the most effective means to wash the hands.

Some job roles will have a certain amount of reliance on the use of hand sanitiser, particularly where there is no other means of actively cleaning the hands.

The effects of using hand sanitiser can lead to other issues, hand sanitisers usually contain 60 to 95% alcohol which help keep the hands free of bacteria and viruses – however, the alcohol can deprive the skin of oils and water, and can result in dry or damaged skin. Please refer to the hand care guidance.

The use of hand sanitiser should be risk assessed the preference is to use soap and water to wash the hands

# Safety Notice Lesson Learnt

## What Happened

A non council employee used an alcohol based hand sanitiser – The person touched a metal surface before the liquid had evaporated. Due to a static charge of electricity, the vapour from the hand sanitiser ignited with an almost invisible small flame on both hands. The person quickly managed to get to a sink to extinguish the flames.

**Consequence:** First and second degree burns.

**Action Taken:** Warning signs indicating flammable liquid are posted on all hand sanitising dispensers

**Advice:** Everyone should wash their hands with soap and water where possible

If only alcohol based sanitisers are used - you must ensure all the liquid is evaporated before touching any surfaces rub into hands for at least 20-30 seconds

**Do not smoke or ignite** a cigarette immediately after using a alcohol based sanitiser

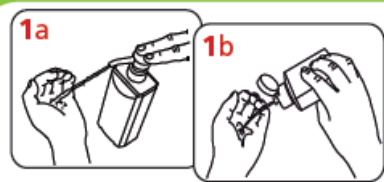


# HAND CLEANING TECHNIQUES

University Hospitals  
Birmingham  
NHS Foundation Trust

## How to handrub? WITH ALCOHOL HANDRUB

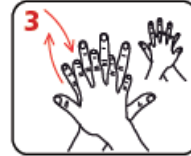
WITH ALCOHOL HANDRUB



Apply a small amount (about 3ml) of the product in a cupped hand, covering all surfaces



Rub hands palm to palm



Rub back of each hand with the palm of other hand with fingers interlaced



Rub palm to palm with fingers interlaced



Rub with backs of fingers to opposing palms with fingers interlocked



Rub each thumb clasped in opposite hand using rotational movement



Rub tips of fingers in opposite palm in a circular motion



Rub each wrist with opposite hand



Once dry, your hands are safe



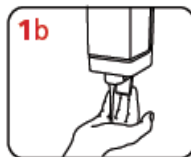
20-30 sec

## How to handwash? WITH SOAP AND WATER

WITH SOAP AND WATER



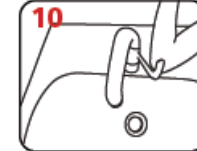
Wet hands with water



Apply enough soap to cover all hand surfaces



Rinse hands with water



Use elbow to turn off tap



Dry thoroughly with a single-use towel



Your hands are now safe



40-60 sec

Adapted from WHO World Alliance for Patient Safety 2006

Hands must be cleaned before and after every patient contact



# Instructions to follow if having to use Hand Sanitiser

## Storage

- Store in a cool and well ventilated place
- Reduce storage of large quantities
- Ensure no ignition sources or naked flames
- Keep out of direct sunlight including when storing in vehicles
- The fire safety risk assessment must be revised to consider storage of hand sanitiser (see COSHH assessment)
- Keep secure and out of the reach of children and vulnerable adults



# Instructions to follow if having to use Hand Sanitiser



- Do not drink hand sanitiser
- Do not place hand sanitiser containers near sources of ignition including electrical outlets or next to oxygen or other medical gas outlets
- Do not eat, drink or smoke during application
- Avoid contact or rubbing the eyes after immediately after application
- Allow the hand sanitiser to dry fully before;  
using an electrical switch or item of electrical equipment, (including an electrically powered medical device)  
using oxygen or a medical device involving oxygen;  
handling a service user or bedding if the service user is receiving oxygen;
- Ensure you follow the manufactures instructions and the COSHH assessment
- Once a container is empty and is not required for re-use, rinse it out with copious amounts of cold water to reduce the risk of fire. The empty container may then be recycled or disposed of in general waste.